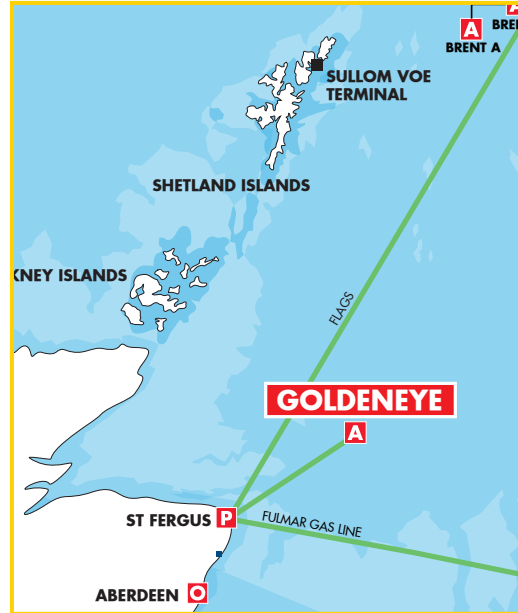




# GOLDENEYE



## GOLDENEYE

The Goldeneye field ceased production in 2011. The Goldeneye platform and pipeline have been studied as part of a carbon capture and storage project, sourcing CO<sub>2</sub> from Peterhead Power Station. In November 2015, the UK Government announced, as part of its Comprehensive Spending Review, all funding for the Carbon Capture and Storage (CCS) Commercialisation Competition was cut. The Goldeneye Operator and owners will consider plans to decommission the facilities in light of the Government's announcement.

## KEY FACTS

Block	14/29a
Sector	Central North Sea
Approx distance to land	130km (81 miles) North East of Aberdeen
Water Depth	396ft (121m)
Hydrocarbons Produced	Gas and Condensate
Export Method	Production and Export of wet gas
Operated / Non-Operated	Operated

## INFRASTRUCTURE INFORMATION

Exit Specification:	Not applicable.
Outline details of primary separation processing facilities:	
Outline details of gas treatment facilities:	

## HIGH LEVEL CAPACITY INFORMATION

The basic capacity information is portrayed by colour coded 'traffic lights' that reflect thresholds of availability over the next 5 years

Available Capacities



Description	Capacity	Ullage as % of system capacity					Comment
		2018	2019	2020	2021	2022	
See above							

## CONTACT INFORMATION

Shell                      For further enquiries regarding the above please contact Matthew Livingston  
**+44 1224 88 7162              [Matthew.Livingston@shell.com](mailto:Matthew.Livingston@shell.com)**

Last update:              January 2018